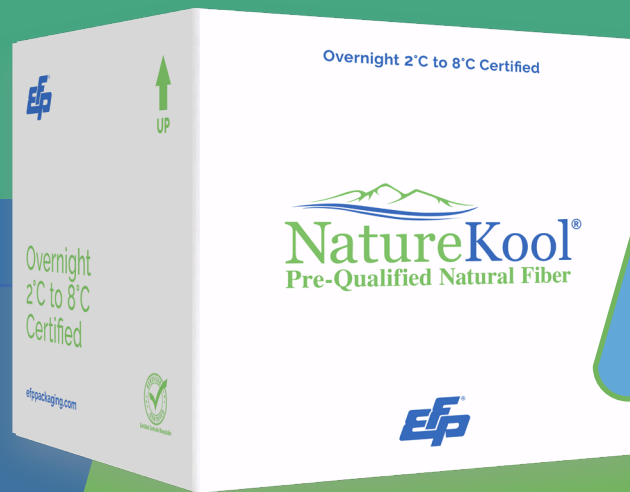


NatureKool® is
your sustainable
shipping solution



Natural fibers for efficient transport of temperature-sensitive products

NatureKool® provides an environmentally-conscious and temperature-assured packaging solution perfect for industries in fresh or frozen food and life sciences products.

NatureKool® Advantages

- Head of the Class in Sustainable Cold Chain Packaging
- Plant-Based Insulation with Excellent Thermal Performance
- Available as Insulation Sets or as Complete Optimized and Qualified Temperature-Controlled Packaging Systems
- Packaging Qualified in EFP's ISTA Certified Cold Chain Lab
- Great Flexibility in Design
- Nationwide Distribution
- Robust Sustainability Profile

Gel Packs, Bricks and PCMs ensure reliable temperature control.



Certified Curbside Recyclable



inquiries@efpcorp.com
efppackaging.com

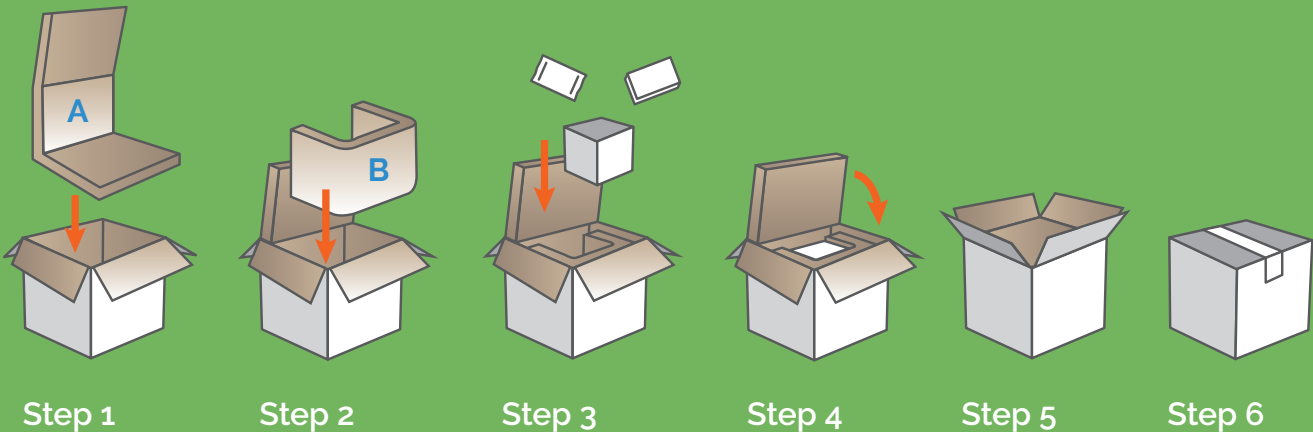


Flexible Sizing and Easy Assembly

Wide selection to fit your needs

Shipping System	Duration (Hours) Summer/Winter	Weight (Pounds)	Payload Dimensions	Inner Dimensions (LxWxH)	Outer Corrugate Dimensions (LxWxH)
NKPQ08.36	36/72	7	5" x 5" x 3"	8" x 6" x 9"	12" x 10" x 13"
NKPQ12.36	36/72	14	8" x 6" x 3"	12" x 10" x 11"	15" x 14" x 14"
NKPQ26.36	36/72	16	8" x 8" x 4"	12" x 12" x 12"	16" x 16" x 16"
NKPQ32.36	36/60	20	15" x 10" x 6"	19" x 12" x 12"	23" x 16" x 16"
NKPQ15.48	48/96	14	8" x 6" x 3"	12" x 10" x 11"	16" x 14" x 15"
NKPQ25.48	48/96	16	9.5" x 7.5" x 6.5"	12" x 12" x 12"	17" x 17" x 17"
NKPQ63.48	48/96	20	15" x 10" x 6"	19" x 12" x 13"	24" x 17" x 17"

Assembly Instructions



Scan for more info.

Don't see what you need? Contact us!
We'll customize a solution for you.



inquiries@efpcorp.com
efppackaging.com

